

Aluminum Case Resistor - MHL-series

FEATURES

- Design for high power purpose
- Excellent for short-time overload

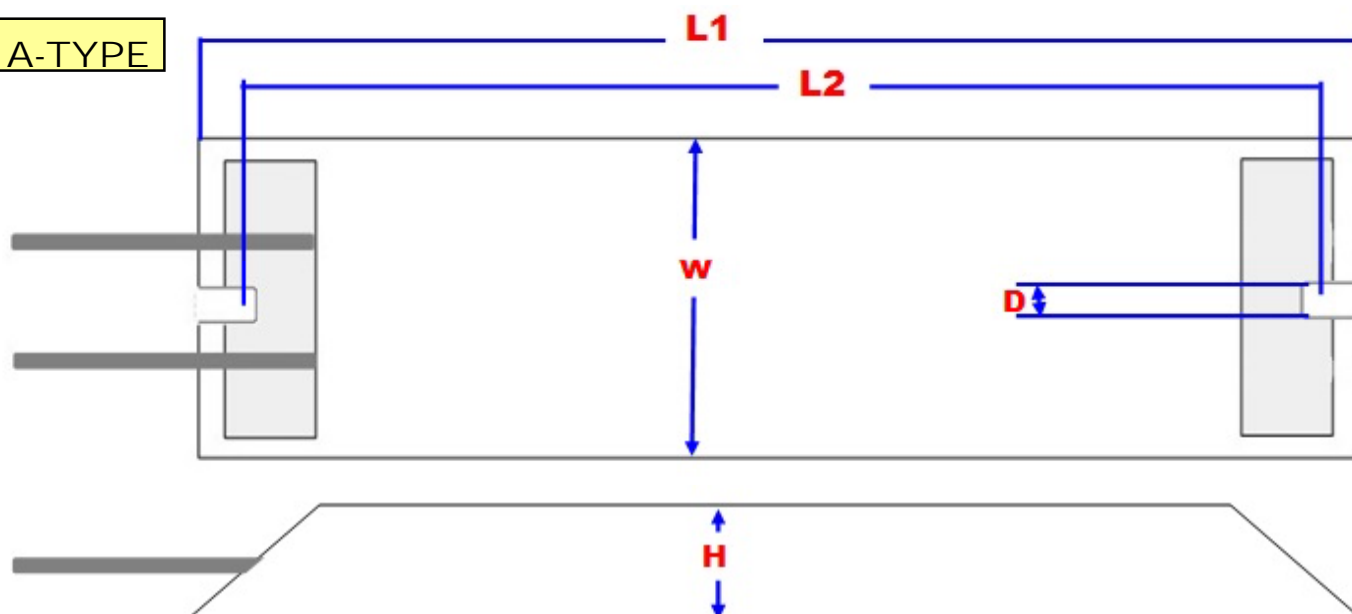
MATERIAL

- Aluminum case
- Element: Alloy Resistance Wire wound on pottery c
- Termination: Heatproof wire
- Filling: SiO₂ sand



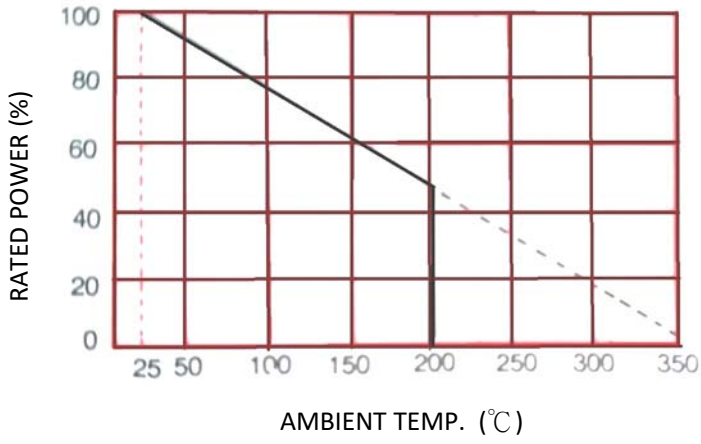
GENERAL SPECIFICATION

A-TYPE

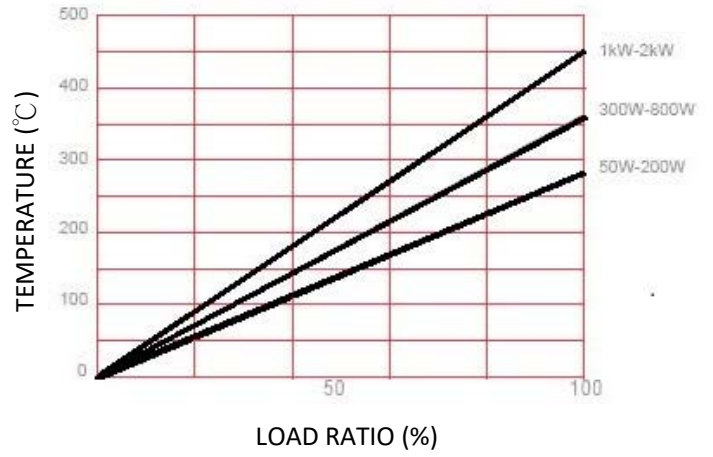


	L1	L2	W	H	D	TYPE
MHL 60W	115	100	40	20	5.3	A
MHL 80W	140	125	40	20	5.3	A
MHL 100W	165	150	40	20	5.3	A
MHL 150W	190	175	40	20	5.3	A
MHL 180W	215	200	40	20	5.3	A
MHL 200W	165	150	60	30	5.3	A
MHL 300W	215	200	60	30	5.3	A
MHL 400W	265	250	60	30	5.3	A
MHL 500W	335	320	60	30	5.3	A
MHL 600W	385	370	60	30	5.3	A
MHL 800W	375	360	100	50	5.3	A
MHL 1000W	400	385	100	50	5.3	A
MHL 1200W	450	435	100	50	5.3	A
MHL 1500W	550	535	100	50	5.3	A
MHL 1800W	570	555	100	50	5.3	A
MHL 2000W	600	585	100	50	5.3	A

DERATING CURVE



TEMPERATURE RISE



CHARACTERISTIC

Temperature Coefficient	$\pm 100\text{ppm} \sim \pm 1000\text{ppm}$
Load Life (1000 hours)	$< \pm 5\% + 0.05 \Omega$
Shorttime Overload	$< \pm 2\% + 0.05 \Omega$
Moisture Resistance	$< \pm 5\% + 0.05 \Omega$
Shock & Vibration	$< \pm 1\% + 0.05 \Omega$
Operating temp	$-55^\circ\text{C} \sim +250^\circ\text{C}$

HOW TO ORDER :

Type	wattage	resistance	tolerance
MHL	60W~2000W	0Ω1~1KΩ or consult factory	5%