

METAL GLAZE RESISTOR - MG series

FEATURES

- Power rating: 1/4W to 2W at 70°C
- Superior performance against environmental condition and overload
- Flameproof body coating
- Standard tolerance: $\pm 5\%$, ($\pm 1\%$ available)
- Standard value: 100K-33Meg in E24 series
- Color band marking, but yellow and grey color are used to substitute gold and silver
- Identify "MG" by orange color at the 5th band

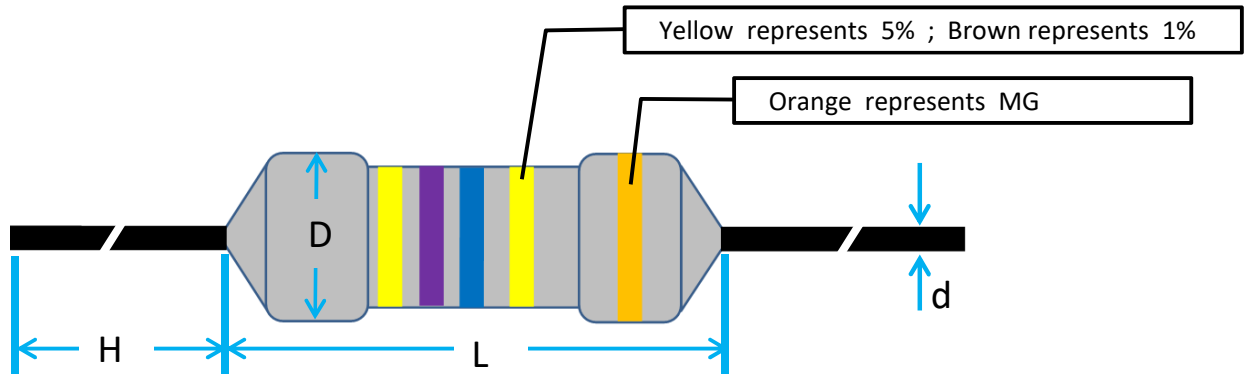


MATERIAL

- Film : super grade glazed film
- Core: high purity ceramic Al₂O₃
- Terminal : standard solder-plated cooper lead
- Coating: Grey silicone



GENERAL SPECIFICATION



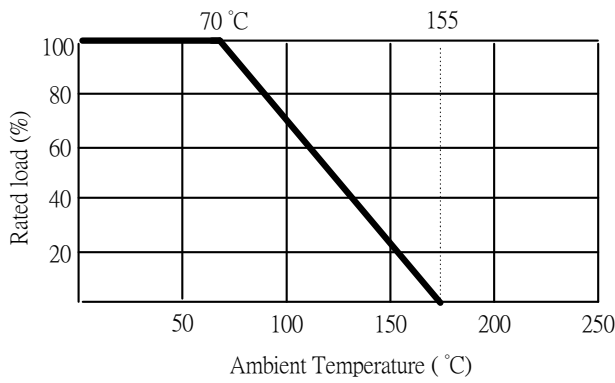
TYPE	DIMENSION (mm)				POWER RATING	MAXIMUM VOLTAGE *		STANDARD RESISTANCE (5%)**
	L	D	H	d ± 0.05		WORKING	OVERLOAD	
MG1/4W	6.0 \pm 0.5	2.3 \pm 0.5	28 \pm 1.0	0.60	1/4W	1600V	1600V	100K~33M
MG1/2W	9.0 \pm 0.5	3.0 \pm 0.5	28 \pm 1.0	0.70	1/2W	3500V	3500V	100K~33M
MG1W	11 \pm 1.0	4.0 \pm 1	35 \pm 3.0	0.80	1W	3500V	3500V	100K~33M
MG2W	15 \pm 1.0	5.0 \pm 1	35 \pm 3.0	0.80	2W	3500V	3500V	100K~33M

* Maximum working voltage (E) determined by $E = \sqrt{PxR}$, but \leq the value listed in above column.

Maximum overload voltage determined by $2.0 \times E$, but \leq the value listed in above column.

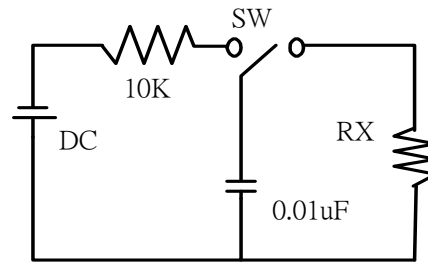
** Resistance out of the standard range is available on request

DERATING CURVE



SURGE WITHSTANDING VOLTAGE

Discharge circuit



Pulse Load 10KV max.

2.5 seconds "ON"

2.5 seconds "OFF"

10 cycles

CHARACTERISTIC

TEST	TEST METHOD		APPRAISE
Temperature Coefficient	IEC 60115-1 4.8	-55°C~155°C	±200ppm max.
Load Life (1000 hours)	IEC 60115-1 4.25	70±2°C at RCWV for 1000 hours (1.5 Hr. on , 0.5 Hr. off)	<±1.5% typical , (±5% in humidity)
Shorttime Overload	IEC 60115-1 4.13	2.5 times rated power for 5 sec.	±2.5% Max.
Temperature Cycling	IEC 60115-1 4.19	-55°C → room temp. → +155°C → room temp. (5 cycles)	±1.0% Max.
Solderability	IEC 60115-1 4.17	235±5°C for 3±0.5 sec.	95% min. coverage
Effect of Soldering	IEC 60115-1 4.18	260±3°C for 10±1 sec. immersed to point 3±0.5mm from the body	±1.0% Max.

HOW TO ORDER :

SERIES	WATTAGE	RESISTANCE	TOLERANCE	PACKAGE
MG	1/4W	470K=470KΩ	5%	T=TAPING BOX
	1/2W	5M6=5.6MΩ	1%	R=TAPING REEL
	1W			B=BULK
	2W			

PACKAGE STANDARD PACKAGE QUANTITY :

TYPE	T=TAPING BOX	R=TAPING REEL	B=BULK	FORMING
1/4W	5000	5000	1000 pcs/bag , 10kpcs/box	By request
1/2W	2000	2500	500 pcs/bag , 5kpcs/box	By request
1W	1000	2000	500 pcs/bag , 2kpcs/box	By request
2W	1000	1000	500 pcs/bag , 1kpcs/box	By request